

47/138

HOMES OF LEE'S CROSSING PLAT NO.3

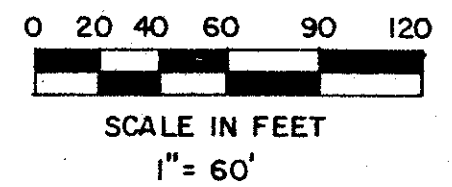
PART OF LEE'S CROSSING, A P.U.D.

SITUATE IN SECTION 34, TOWNSHIP 44 SOUTH, RANGE 42 EAST, PALM BEACH COUNTY, FLORIDA, BEING A REPLAT OF A PORTION OF LEE'S CROSSING PLAT NO.2 (P.U.D.), AS IN PLAT BOOK 42, PAGES 1 THROUGH 5.

138

STATE OF FLORIDA
COUNTY OF PALM BEACH
THIS PLAT WAS FILED FOR RECORD AT THIS DAY OF AD, 1984 AND DULY RECORDED IN PLAT BOOK: ON PAGES AND JOHN B. DUNKLE, CLERK CIRCUIT COURT BY: D.C.

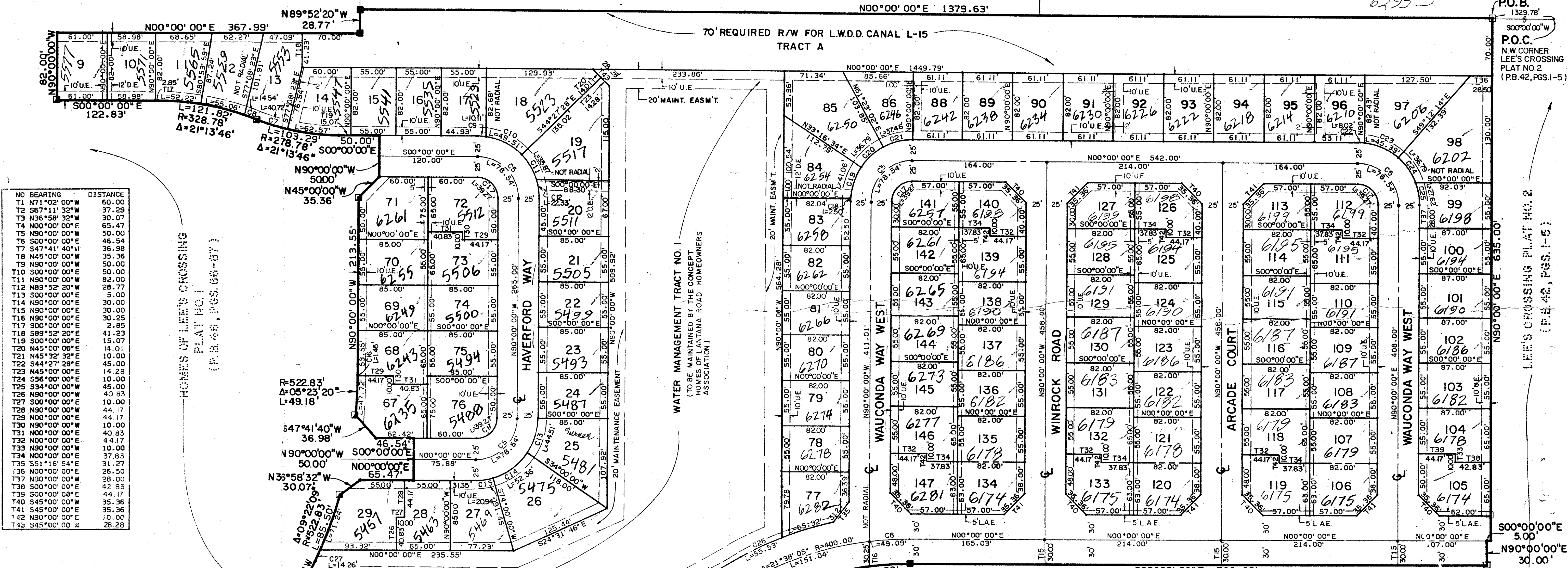
SHEET 2 OF 2



LEE'S CROSSING PLAT NO. 1 (PB. 41, PGS. 3-5)

SPRINGHILL PLAT NO. 1 (PB. 33, PGS. 170-171)

SPRINGHILL PLAT NO. 2 (PB. 34, PGS. 42-44)



NO	BEARING	DISTANCE
T1	N71°02'00"W	60.00
T2	S67°11'32"W	37.29
T3	N36°58'32"W	30.07
T4	N00°00'00"E	65.47
T5	N00°00'00"E	50.00
T6	S00°00'00"E	46.54
T7	S47°41'40"W	36.98
T8	N45°00'00"W	35.36
T9	N90°00'00"W	50.00
T10	S00°00'00"E	50.00
T11	N90°00'00"E	82.00
T12	N89°52'20"W	28.77
T13	S00°00'00"E	5.00
T14	N90°00'00"E	30.00
T15	N90°00'00"E	30.00
T16	N90°00'00"E	30.25
T17	S00°00'00"E	2.85
T18	S89°52'20"E	41.23
T19	S00°00'00"E	15.07
T20	N45°32'32"E	14.01
T21	N45°32'32"E	10.00
T22	S44°27'28"E	45.00
T23	N45°00'00"E	14.28
T24	S56°00'00"E	10.00
T25	S34°00'00"W	45.00
T26	N90°00'00"E	40.83
T27	S00°00'00"E	10.00
T28	N90°00'00"W	44.17
T29	N00°00'00"E	44.17
T30	N90°00'00"W	10.00
T31	N00°00'00"E	40.83
T32	N00°00'00"E	44.17
T33	N90°00'00"W	10.00
T34	N00°00'00"E	37.83
T35	S51°16'54"E	31.27
T36	N00°00'00"E	26.50
T37	N00°00'00"E	28.00
T38	S00°00'00"E	42.83
T39	S00°00'00"E	37.83
T40	S45°00'00"W	35.36
T41	S45°00'00"W	44.17
T42	N90°00'00"E	10.00
T43	S45°00'00"W	28.28

NO	DELTA	RADIUS	LENGTH
C1	9°22'09"	522.83	85.50
C2	5°23'20"	522.83	49.18
C3	21°13'46"	278.78	103.30
C4	21°13'46"	328.78	121.82
C5	90°00'00"	50.00	78.54
C6	8°21'55"	400.00	49.09
C7	8°21'09"	278.78	40.72
C8	2°31'59"	328.78	14.54
C9	7°43'12"	75.00	10.11
C10	37°49'20"	75.00	49.51
C11	27°24'01"	75.00	35.87
C12	17°03'27"	75.00	22.33
C13	34°00'00"	75.00	27.62
C14	40°00'00"	75.00	52.36
C15	16°00'00"	75.00	20.94
C16	0°09'32"	522.83	1.45
C17	90°00'00"	25.00	39.27
C18	1°54'37"	75.00	2.50
C19	31°21'57"	75.00	41.06
C20	28°06'28"	75.00	36.79
C21	28°36'58"	75.00	37.46
C22	6°07'24"	75.00	8.02
C23	34°40'22"	75.00	45.39
C24	28°06'13"	75.00	36.79
C25	21°06'01"	75.00	27.62
C26	1°23'57"	430.00	55.53
C27	1°33'45"	522.83	14.26

SUBDIVISION # 100-100-100-100
 BOOK 47 PAGE 100
 FLOOD ZONE 1-1-1 FLOOD MAP # 178A
 ZONING RS 15E
 SE PUD ZIP CODE 33411
 PUD NAME Lee's Crossing

P.U.D. TABULAR DATA
 TOTAL AREA 23.961 AC.
 UNITS 101
 GROSS DENSITY 4.215 DU/AC
 WATER BODIES 6.59 AC.
 BLDG. COVERAGE 5.91 AC.
 OPEN SPACE 18.047 AC.

47/138 0271-303

Meridian Surveying and Mapping, Inc.
 WEST PALM BEACH, FLORIDA
 DRAWN M.E. DATE JUNE 1983
 CHECKED SCALE 1" = 60'
 DRAWING NO. 83-P-033
 HOMES OF LEE'S CROSSING PLAT NO. 3
 PART OF LEE'S CROSSING, A P.U.D.

LEE'S CROSSING PLAT NO. 2 (PB. 42, PGS. 1-5)

LEE'S CROSSING PLAT NO. 2 (PB. 42, PGS. 1-5)